



TEAM PLACE ON 1984 PERUSTETTU PERHEYRITYS, JOKA VALMISTAA URHEILUVAATTEITA URHEILUSEUROILLE JA YRITYKSILLE. PITKÄT PERINTEET, JOTKA ULOTTUVAT 1950-LUVULLE, VELVOITTAVAT SUOMALAISEN KÄSITYÖN ARVOSTUKSEEN. TEAM PLACEN TUOTTEET OVAT VIELÄ TÄNÄ PÄIVÄNÄKIN SUOMALAISEN TYÖN TULOSTA, JOHON YHDISTYVÄT KORKEALAATUISET MATERIAALIT JA ASIAKKAIDEN OMAT TOIVEET.

TEAM PLACE VALMISTAA URHEILUVAATTEITA LAJIIN KUIN LAJIIN. PELIASUT KESTÄVÄT KOVAA KULUTUSTA JA NE VALMISTETAAN KUNKIN LAJIN VAATIMUSTEN MUKAISESTI. VAPAA-AJANVAATTEISSA KOROSTUU LAATU, ULKONÄKÖ JA KÄYTÄNNÖLLISYYS.

AVAINLIPPU-MERKINTÄ VAATTEISSA KERTOO AIDOSTA SUOMALAISUUDESTA. TEAM PLACEN TEKSTIILITUOTTEET VALMISTETAAN PÄÄOSIN SUOMALAISISTA RAAKA-AINEISTA JA KAIKKI VALMISTUKSEN TYÖVAIHEET SUORITETAAN TOIMITILOISSAMME HELSINGISSÄ. VOIMME YLPEÄNÄ TODETA OLEVAMME SUOMALAINEN YRITYS, JOKA TARJOAA ASIAKKAILLEEN KESTÄVÄÄ LAATUA, OMALEIMAISTA OSAAMISTA JA YKSILÖLLISIÄ RATKAISUJA.

PELIASUT

















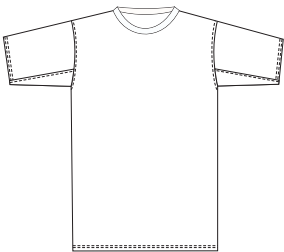
TEAM PLACEN PELIASUT VALMISTETAAN
TEKNISISTÄ MATERIAALEISTA KUTEN COOLMAX
JA DRY-CLIM. KORKEALAATUISET MATERIAALIT
JA SUOMALAINEN OSAAMINEN TAKAAVAT KESTÄVÄN
JA TOIMIVAN TUOTTEEN JOKAPÄIVÄISEEN KÄYTTÖÖN
HUIPPU-URHEILIJOILLE JA HARRASTAJILLE.

MATERIAALI: 100% POLYESTER, COOLMAX, DRY-CLIM

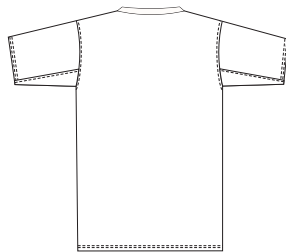
KOOT: 130-XXXL

VÄRIT:

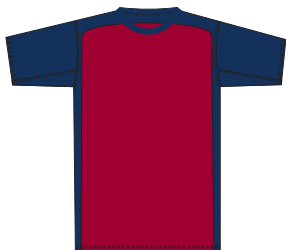
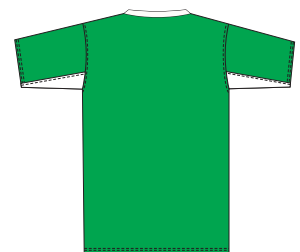
| | | |
|--|--|---|
|  PUNAINEN |  LILA |  VIHREÄ |
|  ORANSSI |  MUSTA |  TUMMANVIHREÄ |
|  TUMMANKELTAINEN |  TUMMANSININEN |  VALKOINEN |
|  VAALEANKELTAINEN |  SÄHKÖNSININEN |  VAALEANHARMAA |
|  VIININPUNAINEN |  VAALEANSININEN | |



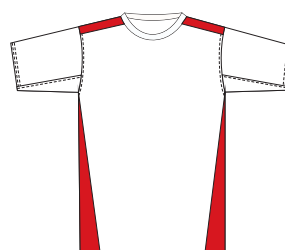
PPLH 101



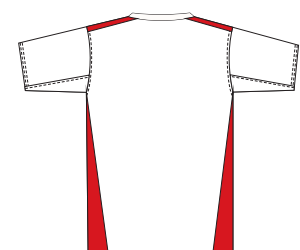
PPLH 102



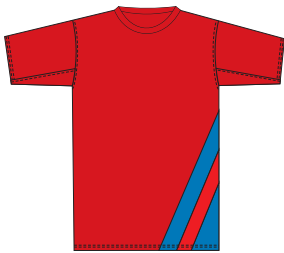
PPLH 103



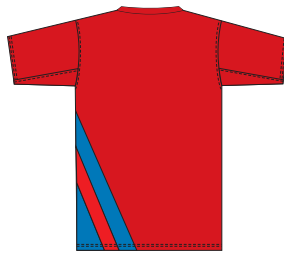
PPLH 104



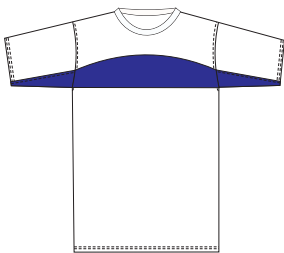
PELIP Aidat



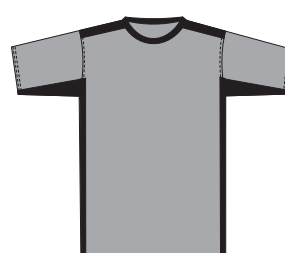
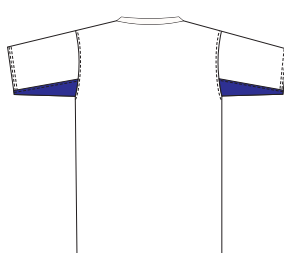
PPLH 105



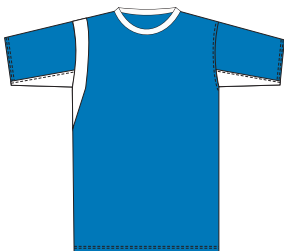
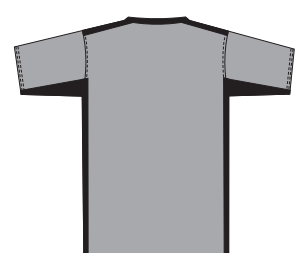
PPLH 106



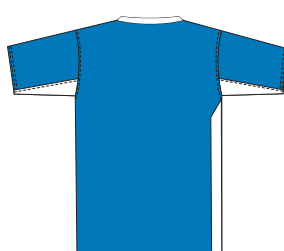
PPLH 107



PPLH 108



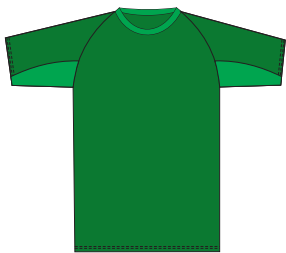
PPLH 109



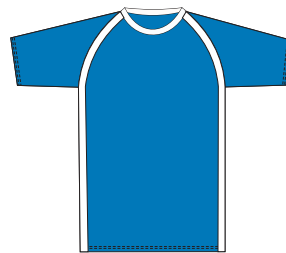
PPLH 110



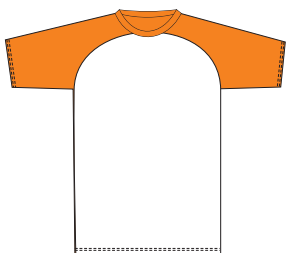
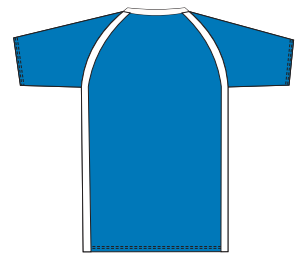
PELIP Aidat



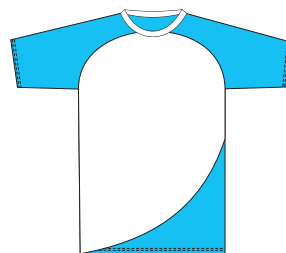
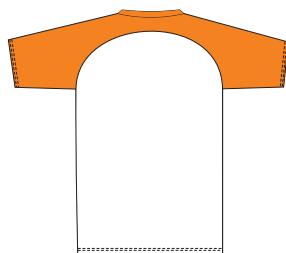
PPLH 111



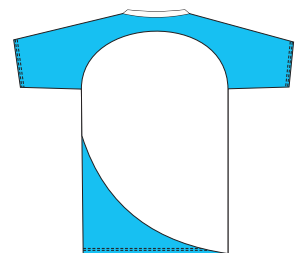
PPLH 112



PPLH 113



PPLH 114



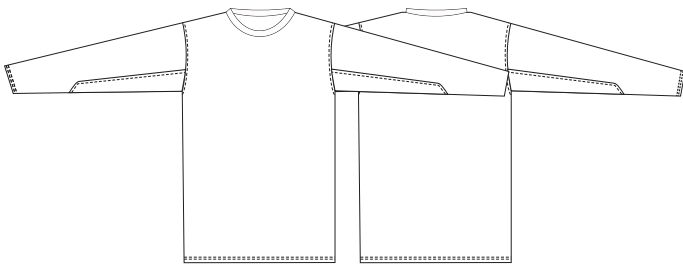
PPLH 115



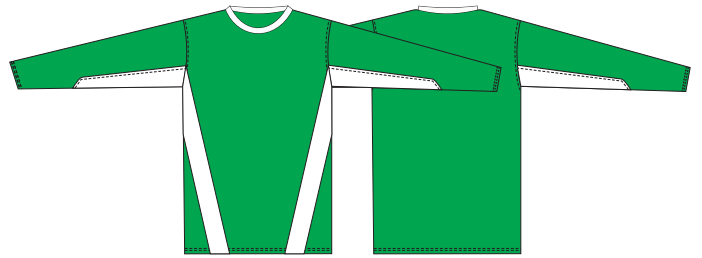
PPLH 116



PELIP Aidat



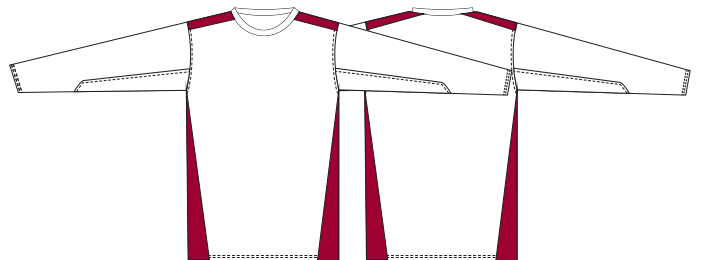
PPPH 201



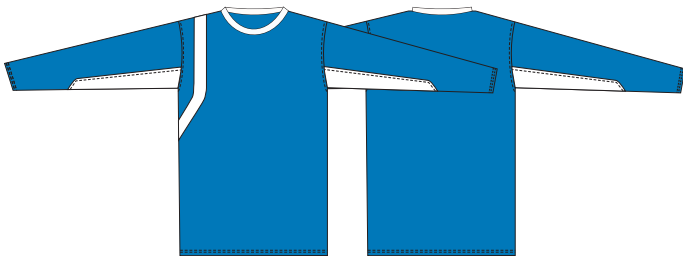
PPPH 202



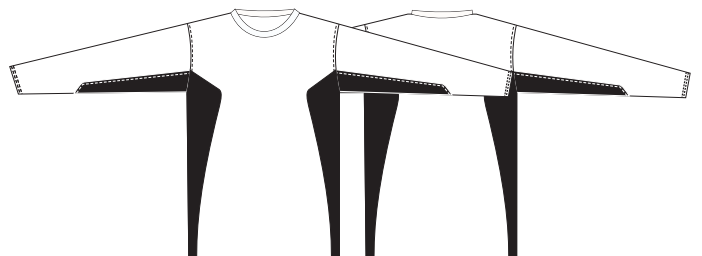
PPPH 203



PPPH 204

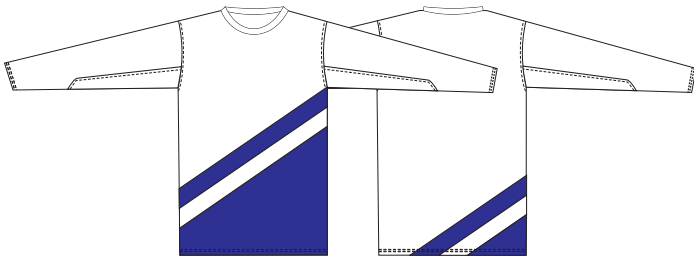


PPPH 205

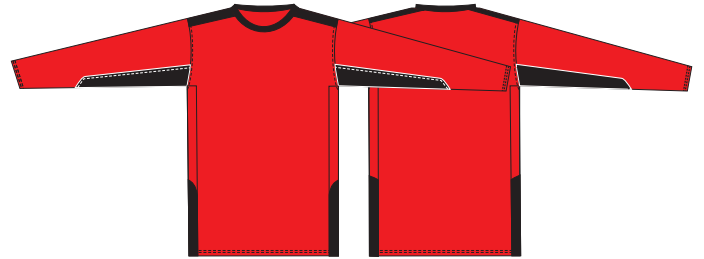


PPPH 206

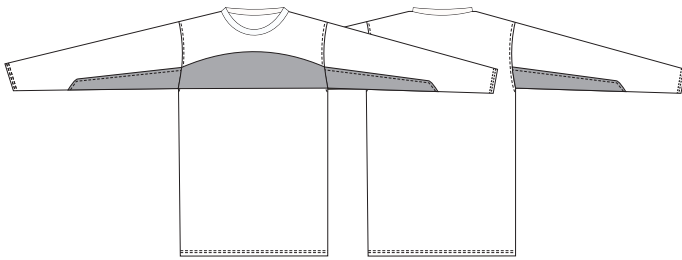
PELIP Aidat



PPPH 207



PPPH 208

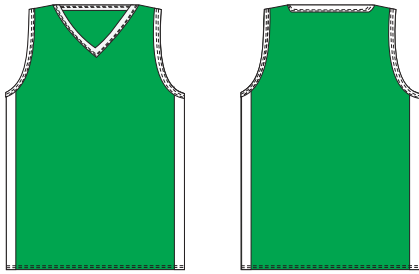


PPPH 209

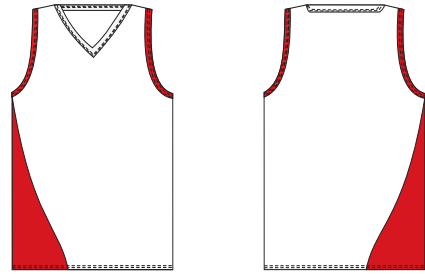


PPPH 210

PELIP Aidat



PPKP 301



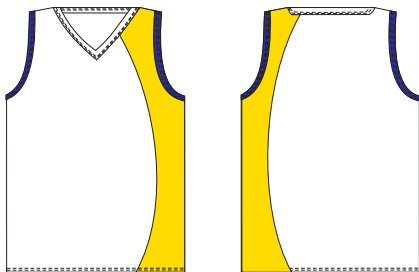
PPKP 302



PPKP 303



PPKP 304

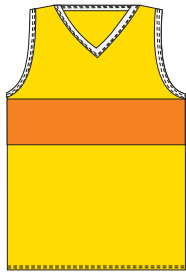


PPKP 305

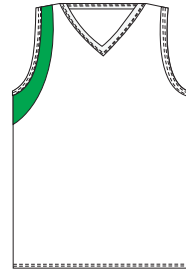
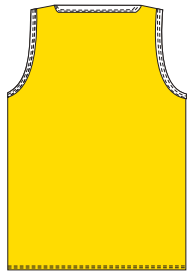


PPKP 306

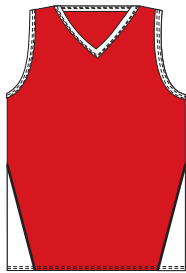
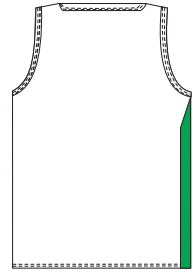
PELIP Aidat



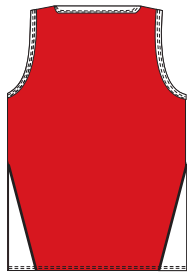
PPKP 307



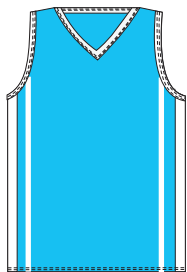
PPKP 308



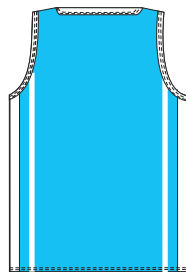
PPKP 309



PPKP 310



PPKP 311



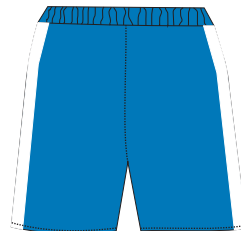
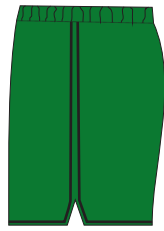
PPKP 312



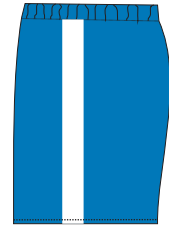
PELIHOUSUT



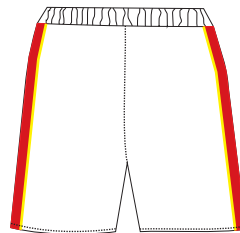
PH 401



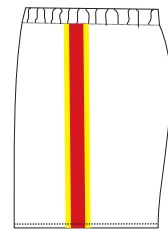
PH 402



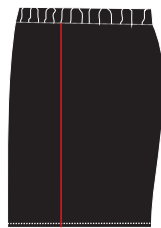
PH 403



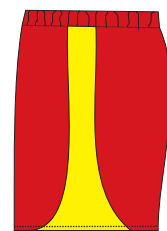
PH 404



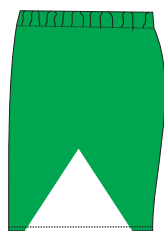
PH 405



PH 406



PH 407



PH 408

